

Telecor's eSeries offers the foremost solution for a Healthcare Facility's security communications needs.



One Platform for everything. Telecor's eSeries provides tremendous flexibility since PoE intercom stations, paging speakers, clocks, message displays can be placed anywhere on a facility's network.

A central workstation provides a full system overview for receptionists and security staff so they can respond instantly in an emergency. The Graphical User Interface allows for instant visual indication of all system activity as well as point and click control of all system operations.

Integration to video provides the ability to view live streams from surveillance cameras. Individual cameras can be programmed to automatically connect and provide a video display of the location that a call is placed from.

As an option, eSeries automatically sends text messages, directly to any mobile or smart phone, whenever an emergency procedure, such as a lockdown is initiated in a hospital.

Messages can be sent by SMS text, email and computer screen pop-ups to a predefined group of people responsible for dealing with critical situations.



eSeries offers public address, emergency notification, music broadcasting, intercom, digitally stored announcements, electronic messaging and a synchronized clock system, all over a facility's LAN

**Just Plug It In!**

High definition audio ensures crystal clear voice communications and outstanding broadcast quality.

**HD Audio**

Peer-to-peer technology provides a practically unlimited number of speech channels with unrestricted access to any device on the system. With no central equipment and no central point of failure, eSeries provides optimal reliability of your communications system.



**telecor**

**In the USA**  
2434 Jerauld Avenue, Niagara Falls, New York 14305  
tel: (716) 285-8272 fax: (716) 285-8287

**In Canada (Corporate)**  
6205 Kestrel Road, Mississauga, Ontario L5T 2A1  
tel: (905) 564-0801 fax: (905) 564-0806

All product information subject to change without notice. Copyright © 2017 by Telecor Incorporated. Telecor, eSeries, Just Plug It In, High Definition Audio and its logos are Registered Trademarks of Telecor Inc.

[mytelecor.com](http://mytelecor.com)



Rev: 0  
ETS-2857

**eSeries**<sup>TM</sup>  
for HEALTHCARE  
FACILITIES



In today's uncertain world, healthcare facilities need to be prepared for the worst and be ready to take action in any crisis situation.

Being able to communicate instantly, ensures that accurate information gets to the people that need it.

**telecor**



# A complete communications solution over the facility's LAN

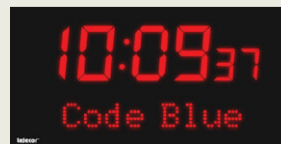
- 1 Public Address
- 2 Synchronized Clock and Message Displays
- 3 Two-way Intercom
- 4 Elapsed Time Clocks
- 5 Intercom Stations
- 6 Rescue Assistance Stations



- 1 Facilitates Public Address to provide information, make announcements and pages, and issues warnings and alert messages. Audio broadcasts can be routed to specific locations or facility wide. Routine announcements can be pre-recorded and fully automated to broadcast at specific times to specific locations. Telephone integration provides the flexibility to make announcements from your facility's telephones.



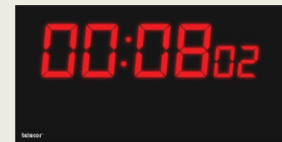
- 2 System-wide Synchronized Clock and Message Displays provide accurate time of day as well as instant text messages notifying personnel of critical situations. Messages can be in plain text or coded for security purposes. Messages can also be augmented with pre-recorded audio announcements over the public address loudspeakers.



- 3 Enables Two-way Intercom Communications for isolation rooms, robotic surgery, laboratories, blood banks, hospital pharmacies, psychiatric wards and quarantine areas as well as in security sensitive areas such as maternity wards and nurseries.



- 4 Elapsed Time Clocks for Operating Rooms time the duration of operating procedures.



- 5 Intercom Stations provide instant assistance for people at access doors, vehicle barriers, and pay stations.



- 6 Personal safety and public assistance requirements are provided by Rescue Assistance Stations for parking garages and public areas, stairwells, and elevators.

